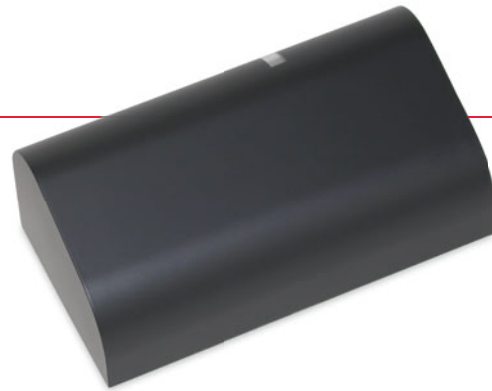


sensing the future

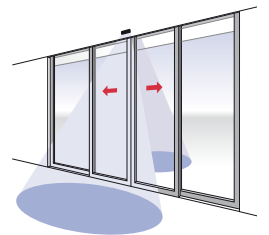


## ArtMotion 2

Microwave motion detector  
for automatic doors

**Simple, reliable, practical**

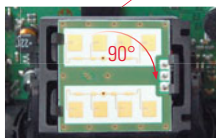
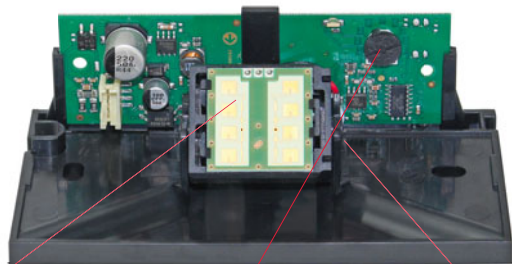
ArtMotion 2 is a simple microwave motion detector in an elegant, small housing



- **Practical and versatile:**  
One device, also for particularly tall and wide doors
- **Wide range of applications:**  
The adjustable field geometry and the radar module that can be tilted mean the door activation can be optimally adjusted to the flow of persons traffic
- **Short startup:**  
Quick and easy startup with potentiometer

# ArtMotion 2

This is how easy it is to install the detector



The motion field pattern (wide or narrow) can be changed by rotating the microwave module



Potentiometer for field settings



Adjustment of the inclination angle

## Reliable in many applications

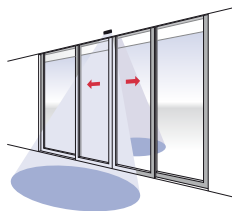
ArtMotion 2 ensures an optimum flow of people because of its ideal activation of automatic sliding doors.

### Situation

Activating sliding doors

### Advantage

- Reliable detection even with tall doors because of the possible installation height up to 4 m

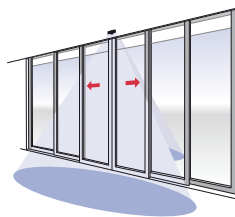


### Situation

Activating telescopic sliding doors

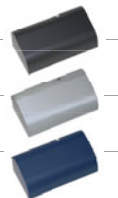
### Advantage

- The max. field width of 4.8 m means one detector is sufficient on each side of the door, even with wide doors



## Order details

Article no.	Description
<b>351081</b>	<b>ArtMotion 2 bk</b> Microwave motion detector black
<b>351083</b>	<b>ArtMotion 2 si</b> Microwave motion detector silver
<b>351082</b>	<b>ArtMotion 2 bl</b> Microwave motion detector blue



## Supplementary products

### PrimeTec B / PrimeScan B

The reliable solution for activating and protecting sliding doors in accordance with EN 16005

### TopScan

The infrared detector prevents collisions with automatic swing and revolving door



### Mechanical data

<b>Material</b>	ABS / PA
<b>Weight (without cable)</b>	95 g
<b>Dimensions</b>	120 x 60 x 48 mm (L x W x D)
<b>Connection type</b>	cable 3 m long, Ø 3.5 mm, with plug
<b>Mounting height</b>	1.8–4 m
<b>Colour</b>	black / silver / blue

### Technological data

<b>Technology</b>	Radar
<b>Transmitting frequency</b>	24.125 GHz
<b>Field size at 2.2 m</b>	min. 0.8 x 1.6 m max. 2.3 x 4.8 m

### Electrical data

<b>Operating voltage</b>	12–36 V DC / 12–28 V AC
<b>Current consumption</b>	≤ 32 mA at 24 V DC
<b>Output</b>	solid state relay, bidirectional 1 s fall-delay time fixed
<b>Switching voltage</b>	max. 48 V AC / VDC
<b>Switching current</b>	max. 120 mA
<b>Switching capacity</b>	max. 550 mW

### Ambient conditions

<b>Protection class</b>	IP54
<b>Operating temperature</b>	–20°C to +60°C
<b>Air humidity</b>	<90%, rel., non-condensing

### Electromagnetic compatibility standards

<b>Immission</b>	EN 61000-6-2
<b>Emission</b>	EN 61000-6-3

### Note

Technical details and recommendations concerning our products are based on experience and are an aid for the orientation of the user. Details stated in our brochures and data sheets do not guarantee special properties of the products. This does not apply to special product properties confirmed by us in writing or individually. Subject to technical alterations.

### Bircher Reglomat AG

Wiesengasse 20

CH-8222 Beringen

Phone +41 52 687 11 11

Fax +41 52 687 11 12

info@bircher.com

www.bircher-reglomat.com